The background features a large, stylized sun with thick, curved rays in shades of orange and yellow. Below the sun, a group of seven diverse people are shown from behind, holding hands in a circle. They are wearing various colored clothing: pink, yellow, black, white, light blue, blue, and red. The overall scene is set against a light blue background.

**2021
Seminole Chamber
Volunteer
Guide**

MySeminoleChamber.com | (727) 392-3245



About the **Seminole Chamber**

Since our founding in 1963, the Greater Seminole Area Chamber of Commerce has served as the active voice of businesses in the extended Seminole area. The Chamber helps its member businesses grow and prosper, and promotes economic development generally in our community -- through education, business assistance projects and programs, marketing opportunities, and targeted networking and fellowship activities.

As a membership of local businesses and residents, we are committed to creating and supporting a stable and ever-growing area to live and work. The Chamber also highlights its members and coordinates with other organizations and area leaders to reinforce the importance of civic engagement in enhancing the quality of life for all of our residents.

Mission **Statement**

The purpose of the Greater Seminole Area Chamber of Commerce is to promote and support new and existing businesses through a wide variety of resources, while building a strong community through civic engagement, outreach programs, and various local events.

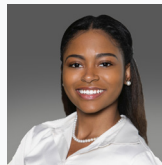
Keys to **Success**

The key to our success is You! As a member of our Chamber, your virtual, financial, and physical involvement keep the Chamber running so we are able to achieve our mission. With your support, we are able to create new programs and events that drive community, leadership, business and personal development.

Chamber **Staff**



Tara N. Pearson
Executive Director
(727) 392-3245
TNichols@myseminolechamber.com



Alexandria Watson
Communications Coordinator
(727) 392-3245
AWatson@myseminolechamber.com

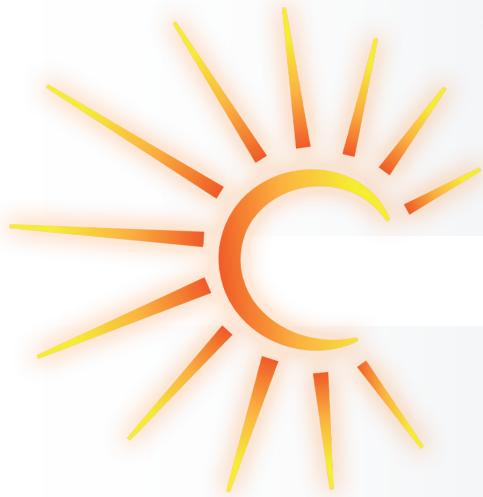


Table of **Content**

Board of Directors 3

Executive Officers

Committee Chairs

Committee members

Committee Chairs 4

About Chamber Committees 5

Membership At Large 6

Chamber Committees 7

Event Committees **8**

Volunteer/Intern 9

Application 10





Board of **Directors**

The Board of Directors is the policy making body of the chamber of commerce. It is in many ways a representative-at-large of the entire business community. It's duties extend well beyond fiduciary responsibility and internal matters of the organization. The Board of Directors is often considered by governmental entities as the spokesperson and leader in decision-making matters of public concern.

Serving on the Board ought to be considered an honor and privilege. Commitment, unselfishness and genuine concern for the well-being of the organization may well be considered key qualifications for a Board member.

Executive **Officers**

The officers, otherwise known as the Executive Committee, are a designated arm of the Board of Directors, which can act as representative of the Board between meetings. Actions of the Executive Committee are subject to review and approval/endorsement by the Board at a subsequent session. The officers meet prior to regular meeting of the Board and prepare the agenda for the regular Board meeting. Officers of the Board consist of the Chairman of the Board, the Chairman-elect, the Immediate Past Chairman, the Secretary, and lastly the Treasurer.

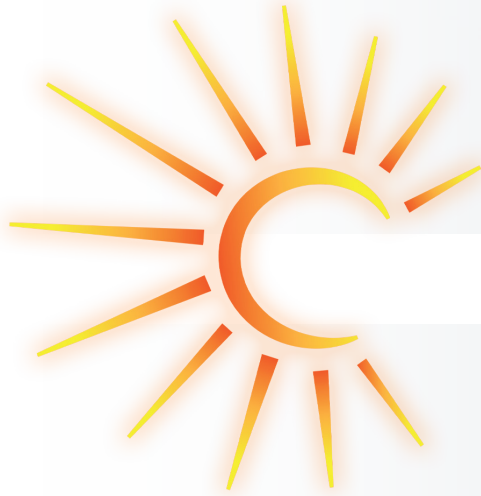
Committee **Chairs**

Committees are the working arm of the Chamber. They are responsible for carrying out tasks approved by the Board. Within the committees, the authority lies with the Chairperson. Committee Chairs are appointed by the Chairman of the Board.

Learn more about the duties of a Committee Chairperson on the next page.

Committee **Members**

Each member is responsible for the work outlined by the committee chairman. Committee members are accountable to the chairman, but the committee as a body is accountable to the Board of Directors, and the committee chairperson will provide reports to the Board.



Committee **Chairs**

Each committee chair is appointed by the Chairman of the Board and approved by the Board of Directors. The Committee Chairman is responsible for carrying out activities assigned to his/her committee. As Chair, he/she has the responsibility to guide, motivate and assist the committee members. The committee chair may establish those sub-committees necessary for the accomplishment of goals and objectives.

Each committee chair is directly accountable to the Executive Director for reporting, coordinating, and maintaining projects within the budget constraints. New programs, projects, proposed expenditures and/or solicitation efforts must be reviewed by the Executive Director who will give final approval.

The Committee Chair coordinates with the Chamber Staff regarding meeting dates, times, correspondence, etc., necessary to do the work of the committee. Chairs are encouraged to plan ahead so that internal staff operations can be efficient and effective.

Committee Chairs should avoid meeting dates that conflict with major Chamber projects or other committee meetings. Prior to the Chamber's annual planning session, committee chairs should guide their committees in determining what has been accomplished, what tasks remain active for the coming year, recommended programs and a budget request. This, in turn, is reviewed with the Executive Director and is included in overall Chamber budget request.





About Chamber **Committees**

Chamber volunteers help the heart of the organization beat. Committees are what help organize and grow the Chamber. Committee members plan negotiate and brainstorm new ideas while maintaining traditions found in Greater Seminole.

You can join as many committees as you would like, as long as you are able to add value to each. The following are the current committees of the Greater Seminole Area Chamber of Commerce:

Marketing & Networking Committee

Ambassador Committee

Entrepreneur & Small Business Development Committee

Economic Development Committee

Restaurant, Hospitality & Entertainment Industry Group

Retail & Service Industry Group

Women Own Network (WON) Group

Annual Dinner & Awards Committee

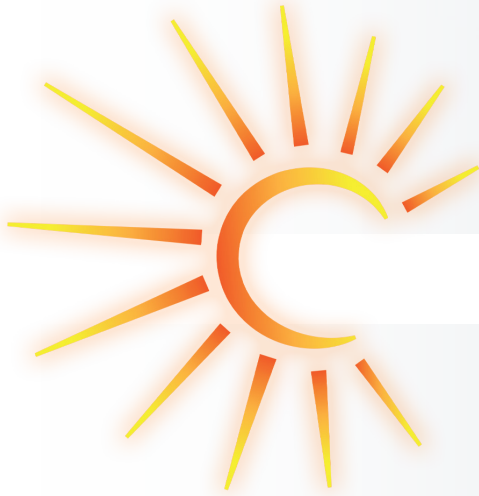
Stampede Committee

Tribute To Teachers Committee

Go Local Business Expo Committee

Kids Appreciation Day Committee

Annual Golf Tournament Committee



Membership **At Large**

One of the best things you can do to support the Seminole Chamber and, thus, the Greater Seminole Area community and businesses, is by giving us your time through volunteering and serving on a committee. With that said, we understand everyone can not spare the time commitment that is required. So, the next best help is your financial contribution.

Members at large are investment-paying members that, because of time constraints, do not have the opportunity to work on a committee. As mentioned earlier, the stronger the membership, the stronger the Chamber of Commerce in the community. The financial support provided by members allows those who do have the time to work on a committee to accomplish goals and objectives.

You can contribute financially in a number of ways--all while promoting your own business/organization.



To learn more about the Chamber's sponsorship opportunities, dive into our 2021 Sponsorship Guide or visit MySeminoleChamber.com/sponsorship-guide



Chamber **Committees**

Marketing & Networking Committee *Chairperson: Ali Bean*

This group assists chamber staff with marketing the chamber and planning various networking events, as well as assists with recruiting new members and promoting the Chambers Shop Local program.

Ambassador Committee

A group of Chamber Members who welcome new businesses, new members or staff to the community and chamber, celebrates business anniversaries, tours expansion projects and new facilities. The group also handles ribbon cuttings and attends grand openings, open houses, etc.

They group meet for lunch every other month beginning in February. Ambassadors are supplied a green sash and name tag, and the most outstanding ambassador will be honored annually at the Annual Installation lunch.

Retail & Service Industry Group

This committee exist to help keep all members aware of the finer details of these industries in the city and our area. Members will collaborate with each other to discuss pressing issues and potential opportunities to pursue. The group will have the opportunity to invite speakers and community leaders for educational and informational purposes.

Women Own Network (WON) Group

Woman owned business group who meet regularly, network and collaborate with each other to discuss issues and collaborative opportunities.

Restaurant, Hospitality & Entertainment Industry Group

This committee exist to help keep all members aware of the finer details of these industries in the city and our area. Members will collaborate with each other to discuss pressing issues and potential opportunities to pursue. The group will have the opportunity to invite speakers and community leaders for educational and informational purposes.

Economic Development Committee

This committee works to identify and assess business & community development opportunities, and further recommend development projects to the city and to conduct research & provide input on community and business development programs.

Entrepreneur & Small Business Development

This committee will work to create a robust entrepreneur and small business resource center under the umbrella of the Chamber Small Business Education foundation. Members will bring their expertise in various professions to conduct research and provide services and input on resources for those who would like to start or grow a business in the greater Seminole area.

Event Committees

Annual Dinner & Awards Committee

This committee helps to organize the Annual Awards & Dinner and recruit award nominations. The Annual Dinner & Awards event recognizes and honor businesses, people and organizations in greater Seminole.

Stampede Committee

This committee helps to organize and plan this event which host up to 300 runners and walkers at the Seminole City Park and Pinellas Trail. Help plan post-run activities, run route, logistics and more.

Tribute To Teachers Committee

This committee helps to organize this breakfast event which honors a teacher from each primary and secondary school in the greater Seminole community. These teachers are symbolic of the hundreds of teachers who make outstanding contributions to the children and youth in our community each day.

Go Local Business Expo Committee

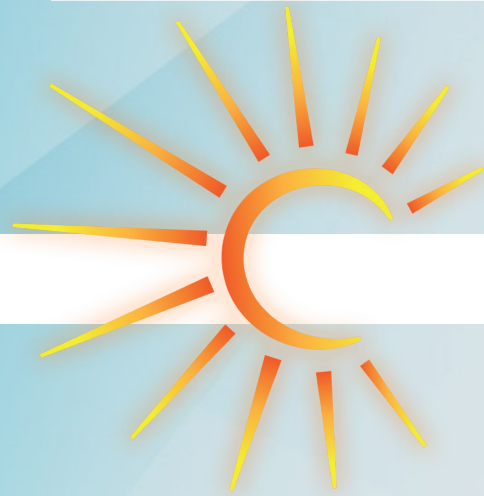
This committee helps to organize this event which gathers local businesses in one location to network and share their products and services in Expo fashion. Will plan logistics, recruit, entertainment and more.

Kids Appreciation Day Committee *Chairperson: Steve Nickse*

This is an end of the year annual celebration, on the last day of school, honoring Seminole area elementary students. This event aims to reward local elementary age students for a job well done on the last day of school, while also promoting summertime safety.

Annual Golf Tournament Committee

The annual tournament is one of the Chamber's largest fundraiser each year, enabling us to continue to provide valuable county-wide services to our members and to the community. The event serves as a great way to engage with your Chamber peers and build relationships with local business leaders.

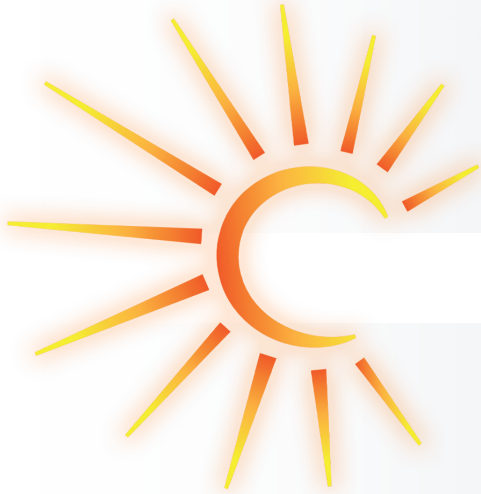


Volunteer/Intern **Positions**

Being that the Seminole Chamber of Commerce has two staff members, we encourage volunteers to aid in our day-to-day tasks. Whether it be a high-school student trying to secure hours for graduation, a college student attempting to fulfill their internship credits, or a member of the community looking to help us serve the Greater Seminole Area, the Chamber welcomes you to join our team as a volunteer/ intern.

Responsibilities Will Include

Reporting to the Executive Director, the volunteer office assistant/intern will perform a range of administrative and office support functions for Chamber of Commerce (COC) to facilitate the efficient operation of the organization. Having to complete light administrative duties, intermediate knowledge of technology and high communication skills are strongly recommended for this position.



Application for **Sign Up**

You may fill out this form to express your interest in volunteering. You may also do so by sending us an email to TNichols@myseminolechamber.com stating which you would like to join, or by giving us a call at (727) 392-3245.

Name: _____

Business Name: _____

Cell Phone: _____ **Other Phone:** _____

Email Address: _____

Which committee would you like to join? (List them all here)



MySeminoleChamber.com | (727) 392-3245